

***New SAFETY Product* for Families Dealing with Driving Issues Across the Lifespan**

Missy Bell, OTR, DRS, CDI

INTRODUCTION

IDEA Drivers Education company owner, Steve Blank, has created what every family needs to consider getting, but they don't know it yet. What is it? A drill-free training brake. How much does it cost? Well, I'd say it's priceless, and here's why.

Every family in our country is dealing with at least one of two safe driving concerns at some point. One is with a Teen. The other is with an Elder.

With each person, comes age-related performance issues that affect safe driving. For multiple families, additional factors come into play such as individualized differences spanning from invisible processing dysfunction to more evident disability concerns. These might include a temporary or steady decline in mental or physical capacity and even risks due to prescribed medication, blood sugar status, and stress management.

An easy install and portable safety feature such as a passenger side training brake (or better yet gas and brake combo) could potentially help save lives in any such case. Therein lies the *priceless* factor.

DISCUSSION

In the first situation, we have an inexperienced driver, who is either overly-anxious or overly-confident and often a mix of both. I see this all the time with new driving students but especially with adolescents dealing with unique challenges (mild to severe) and in need of extra support.

In the second example, we have a person in a later stage of development who is facing a medical change. Perhaps from something sudden and acute. Maybe prolonged or progressive. Even, the inevitable, age-related shifts we will all most likely face are a concern for safe driving independence.

As a certified driving instructor, I appreciate the accessibility to both a top of the line training brake and gas pedal over-ride system for everyone's best safety. This device is especially beneficial with my student drivers requiring remedial assistance. Many of them have delayed processing speed or can freeze up under pressure. That can also be the case with any teenager. It's just a part of learning. But that's not the time when you want something bad to occur.

It's for these reasons that a passenger-side training brake or gas/brake combo is the best and safest choice if any parent-led training is to be done. I know it's unrealistic to expect my client-

families to purchase and bolt a system like mine into their own cars for family-supported driver training, but I also know how things go in the real world with instruction.

With Driver's Ed, the pace of lesson progression is often way too fast for some students, and with therapy clients, the course of training can take many months to over a year in some cases. It just depends on each situation, but in either scenario, there is often a request for family-led training or assistance between lessons. Appropriate follow-through with the home program recommendations 100% time rarely happens.

A drill-free brake or combo system custom to one's car can allow families to perform more in-car training at their convenience. *(For details, please see Figure 1 and 2 in the Appendix section)*

The family vehicle won't be unnecessarily damaged, and the student will be driving at a pace that works best for him or her.

This use case is especially valuable for persons more "at risk" because driving rehab and private instruction are both quite expensive. You could potentially cover the cost of having such a device in just an average of few rehab or training sessions.

A family well involved in the extensive training process can also help with the information gathering process. This gets back to the most important issue—safety!

A GROWING OPPORTUNITY

I know as an OT/Driving Rehab Specialist, the accumulation of information makes the safest and best driving capacity decisions. An evaluator cannot always identify what a family member sees. An additional set of eyes is certainly valuable in client safety situations where there could be a potential decline in function such as with dementia or early Alzheimer's. It could even prove necessary for assessing driving fitness with a young adult with Autism or a processing challenge. It may be the family member in these instances who decides driving retirement or cessation is best so planning for safe community mobility can begin.

There are so many reasons why I am in support of this product, but most importantly it offers what could be a safer driving option for all families to consider.

Consider a passenger side system to help make life-saving decisions. The cost of not doing so heavily outweighs the price of any piece of safety equipment.

LIMITATIONS

The drill-free training brake (manufactured by IDEA Drivers Ed Company and Subsidiaries Driver Training Products/Driver Training Products) is custom made here in the USA and hand-assembled for best safety and quality. Despite its high quality, its availability is somewhat limited at this time. To keep up to date with product availability and customization to car make/model or for pricing check out the websites www.DriverRehabProducts.com and www.DriverTrainingProducts.com. *There is a new Drill-less Brake website coming in June.

Not all families may be able to afford a product such as this. That is why we are working on creative solutions to this problem. My hope is that in the future, driving schools, private instructors, and driving rehab specialists will include this training product as an additional fee-for-service feature or rental option to make it more accessible. Additionally, insurance providers may see an added benefit and help with coverage. We are already working with dealerships across the country to add a safety package to car purchases and financing plans. Exchange for rebate options may even be available in the future from IDEA Drivers Ed companies like with other brake products.

This product is not intended to replace any medically-necessary driving rehab intervention or driving instruction by a specialist. Sometimes parent-led or family assisted training is not the best safety option for various reasons. Families interested in this product who have any concern about a family member should speak to a physician, driving rehab specialist, and driving instructor before electing to perform any training of their own. Otherwise, it's just too dangerous.

ABOUT THE AUTHOR



Melissa “Missy” Bell is a licensed Occupational Therapist with pediatric and driving rehabilitation experience since 2001. She ran a ***Driving Readiness for Teens*** program as a part of her specialty OT/Educational Support Services clinic, Extra Credit! LLC. Missy is advancing her skills through mentorship and advanced education to work with additional populations and for additional certification in the field. She has obtained AOTA driving badges in adolescent driving, and adult driving and community mobility levels I, II, III and is a certified Carfit OT technician/volunteer and “Behind the Wheel With ADHD” instructor. She is completing the “Take The Wheel” workshop by Adaptive Mobility Services, is an ADED member and a certified driving instructor. She works as an independent contractor in Texas and has enjoyed assisting in various ways with Driver Rehab Products and Drivers Ed.com while completing her advanced OT/DRS education. You can connect with Missy Bell at <https://www.linkedin.com/in/melissabellatx/>

STATEMENT OF DISCLOSURE

My intent for writing this product recommendation is not centered around sales and I have received no kick-back for writing this article on my own time. I hired to help expand the rehab side of the business for a few months this Spring and assisted with projects and campaigns. My ethical and professional responsibility as a medical field practitioner is to educate and assist others with safe driving and independence. I was honored to work with a company that feels the same and has created the first-and-only commercial drill-less brake product of its kind to help others be safer on the road. I plan to share more about the beneficial and functional applications of this product for my role with the soap-box sessions this year at ADED. I will be stepping away from my roles with the company to prevent conflict of interest and recommending all available product and equipment options to my clients.

–Missy Bell

APPENDIX

Figure 1. Drill-less Brake Product Overview with Illustrations

DRP

Custom Steering Column Mount for Drivers Side

THE FIRST EVER, DRILL-LESS BRAKE.

www.DriverRehabProducts.com

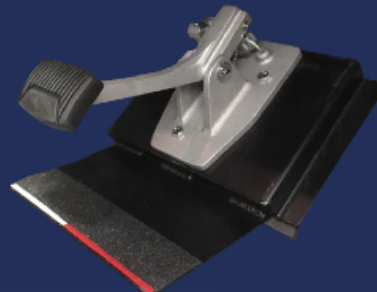
- ◆ 30 Minute Install Time
- ◆ No Holes or Drilling Anywhere
- ◆ Ideal for Temporary Use
- ◆ Always USA Made

Figure 2. Drill-less Brake & Platform Brake Flyer for Select Dealers (next page).

The First Ever

DRILL-LESS TRAINING BRAKE

NO BOLTING OR DRILLING ANYWHERE



NO DRILLING



NO
CAR DAMAGE



SHORTEST
INSTALL TIME
OF ANY BRAKE
AVAILABLE

PERFECT FOR:

- DEALERSHIPS AND FLEETS
- PARENTS FOR TEMP TEACHING
- DRIVING SCHOOLS

WWW.DRIVERTRAININGPRODUCTS.COM

443-326-1543

May 2019